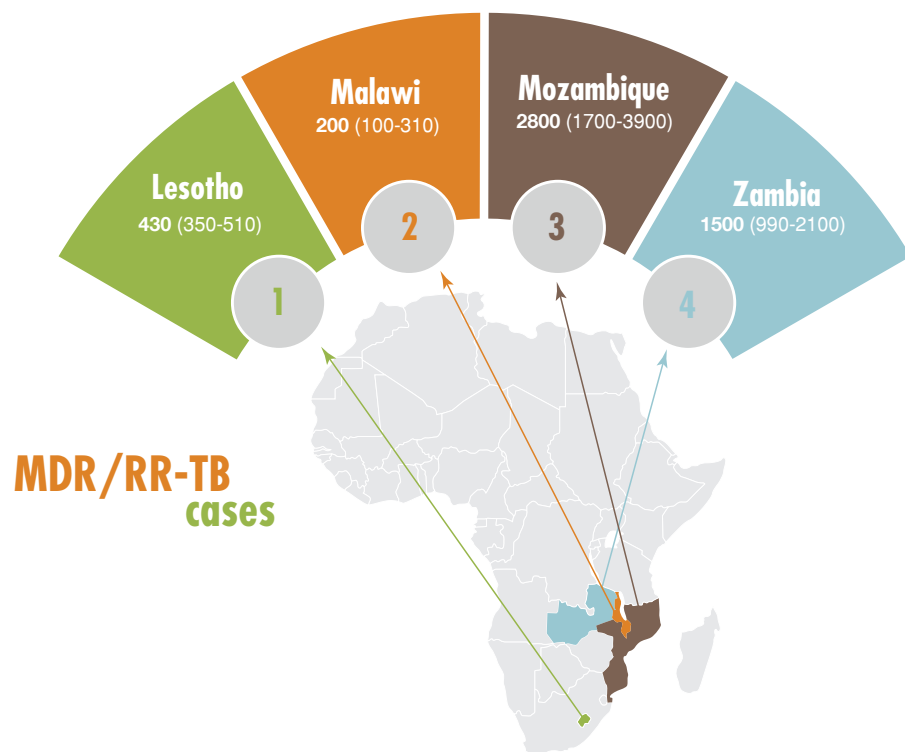


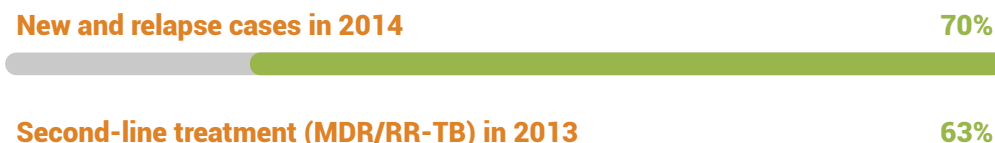
Estimated MDR/RR-TB cases among notified pulmonary TB cases (2015)



Southern African Tuberculosis and Health Systems Support (SATBHSS) Project



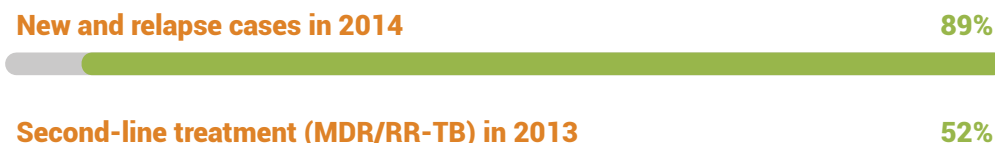
LESOTHO



MALAWI



MOZAMBIQUE

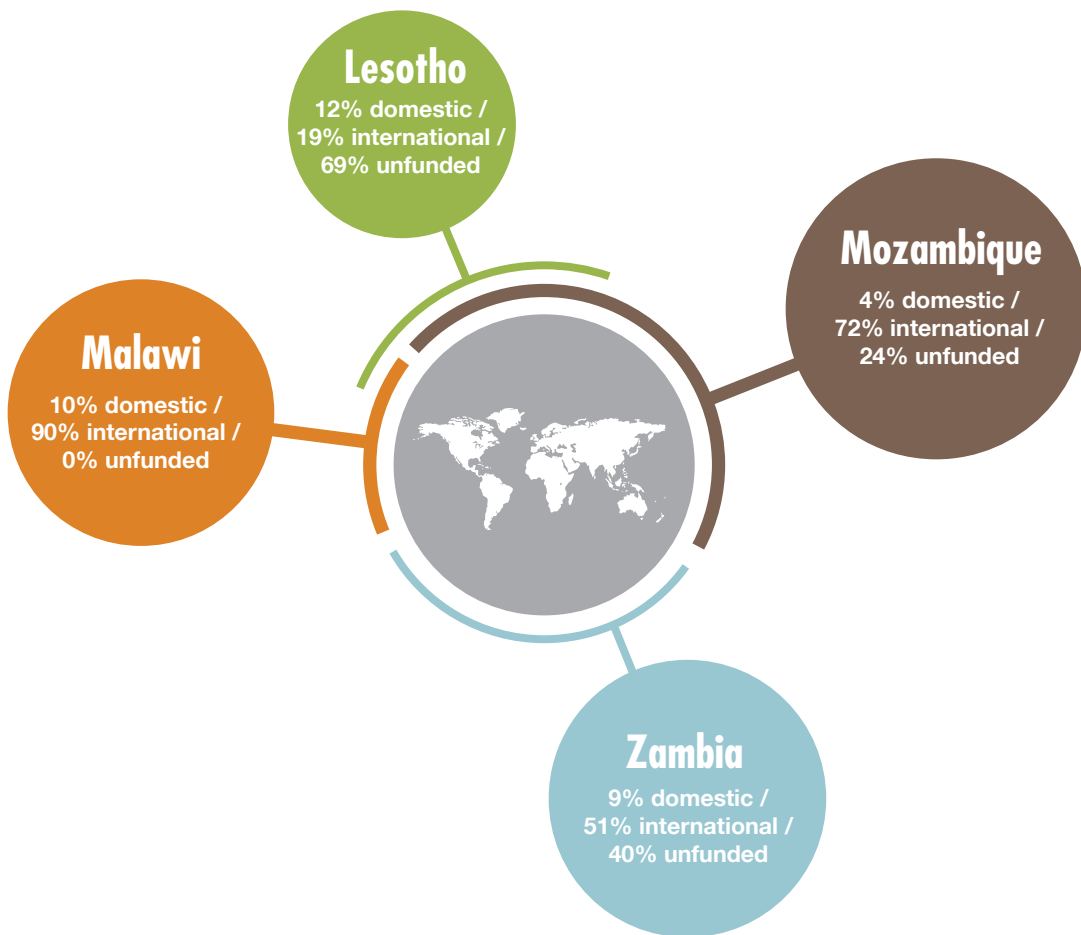


ZAMBIA



Estimated MDR/RR-TB cases among notified pulmonary TB cases (2015)
 Lesotho = 430 (350-510)
 Malawi = 200 (100-310)
 Mozambique = 2800 (1700-3900)
 Zambia = 1500 (990-2100)

TB Financing 2016



Funding Source

Lesotho = 12% domestic, 19% international and 69% unfunded (deficit)
 Malawi = 10% domestic, 90% international and 0% unfunded (deficit)
 Mozambique = 4% domestic, 72% international and 24% unfunded (deficit)
 Zambia = 9% domestic, 51% international and 40% unfunded (deficit)

Resources required in 2016 for inpatient and outpatient care for Drug Susceptible TB (DS-TB), Multi-Drug Resistant TB (MDR-TB) and TB in US\$ Millions (2016)

Lesotho	DS-TB Care	0.30
	MDR-TB Care	0.11
	TB Care	6.8
Malawi	DS-TB Care	-
	MDR-TB Care	-
	TB Care	-
Mozambique	DS-TB Care	3.4
	MDR-TB Care	0.13
	TB Care	27
Zambia	DS-TB Care	2.00
	MDR-TB Care	0.61
	TB Care	13